



CURE's Centers for Civic and Social Involvement: Guidelines and Structure

Israeli Partners



Georgian Partners



Social and Civic involvement unit principles and vision

The Social and Civic Involvement Unit operates various programs to help socioeconomically disadvantaged segments of society, with the goal of reducing inequities in the educational, economic and social spheres. Students with leadership qualities are invited to take part in discussing, planning and acting to achieve greater social equality based on the ideals of social justice and rights.

The unit aspires to leverage the institute's unique resources: knowledge, reputation and, especially, human capital.

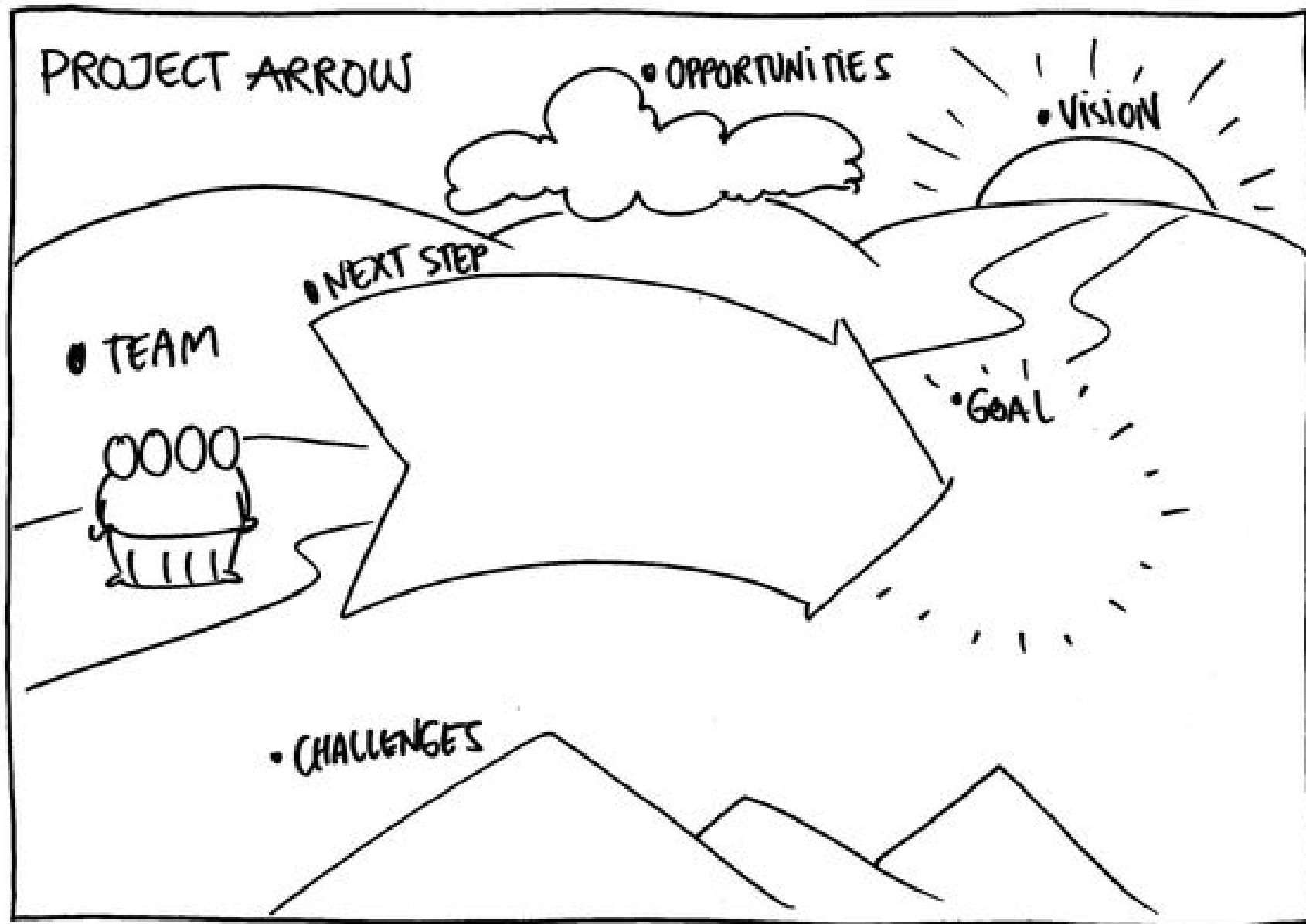
Today's students are tomorrow's leaders

Academic knowledge integrated with social engagement

To bridge gaps and engage communities



**BUILD
YOUR
LOCAL
TEAM
VISION**



[illegible]

- 

Define your model of action

1. Social funding:

University, NGO, student union

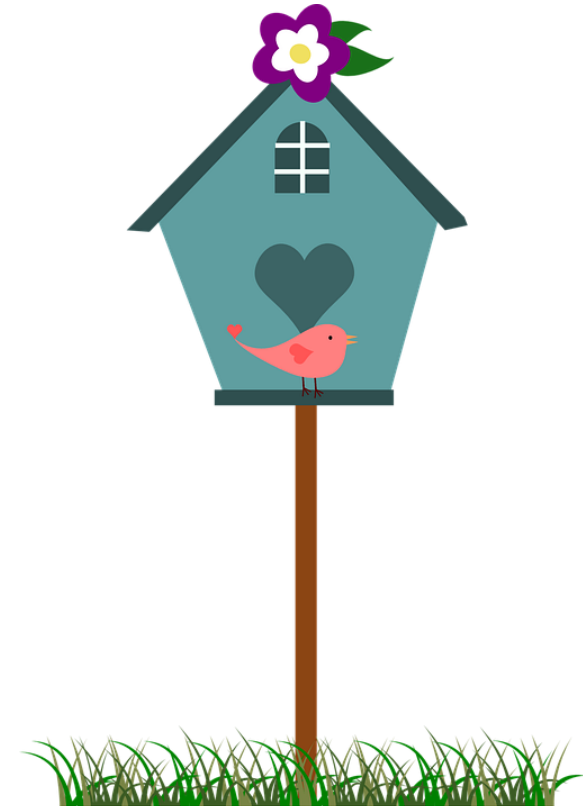
2. Students incentive:

Scholarship, volunteering, academic credit.



Place the center structure

- Where is it?
- Who are the team's members?
- What are your team 3 steps for sustainability (independent activity) in the 3 next years?



2018

1. active courses combine social civic involvement.
2. Students initiatives pilots implementation and place making design of the local story on board in a centralized place on campus (slide 10).
3. closing year clip summarizing activity.
4. celebration.

2019

1. staff member manager of the center.
2. second staff member community coordinator.
3. courses combine social civic involvement.
4. office/center of activity.
5. ongoing of 3 students activities.
6. closing year ceremony.

2020

1. second generation of students initiatives in a specific course for that.
2. opening seminar of social activity in opening year with cure members.
3. Closing year ceremony.



**Sustainable center for
social and civic
involvement**



Why design the local story ?

“It takes a place to create a community,
and a community to create a place.”

Fred Kent

“By telling our own story we make meaning
For others and ourselves” (McAdams,1993)

Collect and design the story board with community – world café is a good way for that

1



The story board will include:
Past- memories and history. Fairy tales and traditions. Culture tastes and talents.
Present- map of campus and its surroundings, demography of staff and students.
Future- dreams and wishes.



2

Choose a centralized **place** on campus for the board...
colourful furniture will encourage to sit and feel **home**
like.



Technicalities:

1. The board is usually made of aluminium printed sign in the size of 3 meters long and 1.20 high.
2. It can be hung on a wall or stand on polls.
3. The saloon will be located in a high traffic place.

3

Choose a centralized place for the board and expose it in a big celebration with community



Holding the process

1. Exposure event
2. Reflection on the process.
3. Move it on: maintenance staff, learning kits, instructional sessions of teams participating with additional population groups.

Celebration